

Interpolated Sediment Contamination Levels of Copper (Cu) in Lake Erie

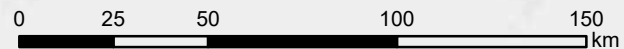
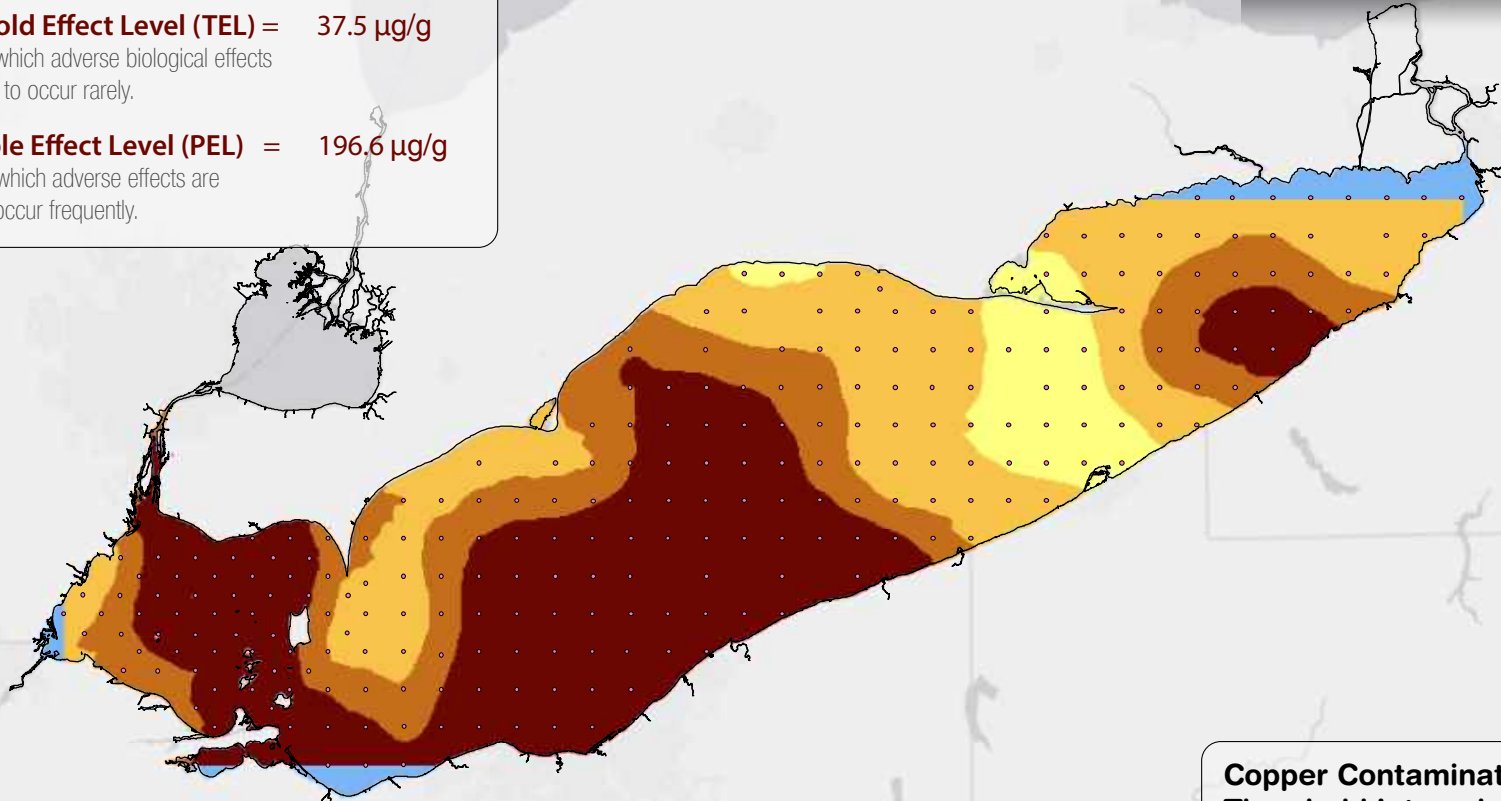
CCME Copper Contamination Effect Levels

Cu Threshold Effect Level (TEL) = 37.5 $\mu\text{g/g}$

Level below which adverse biological effects are expected to occur rarely.

Cu Probable Effect Level (PEL) = 196.6 $\mu\text{g/g}$

Level above which adverse effects are expected to occur frequently.



1:2,000,000

Water Boundary
 — Shoreline

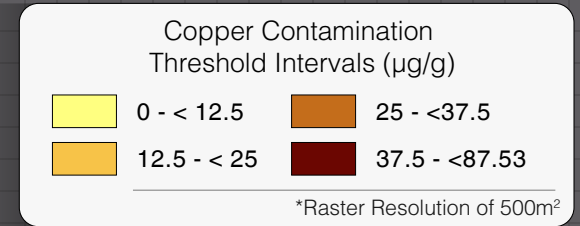
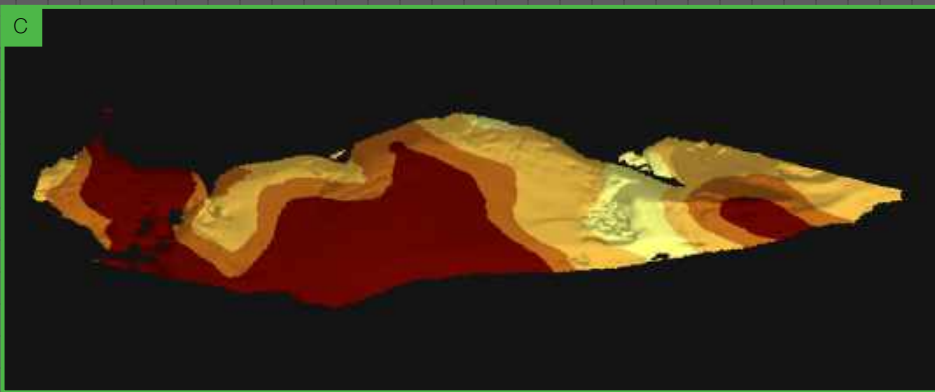
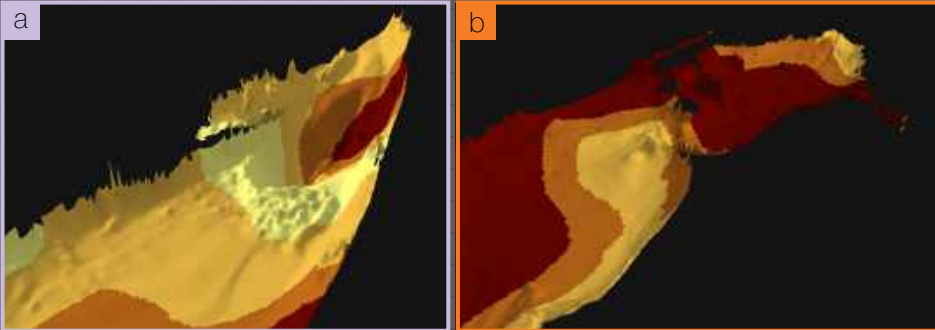
Sediment Contamination Data
 • Copper Sample Point

Copper Contamination Threshold Intervals ($\mu\text{g/g}$)

- 0 - < 12.5
- 12.5 - < 25
- 25 - < 37.5
- 37.5 - < 87.53
- No Interpolation Value

*Raster Resolution of 500m²

3D Elevation Overlay Visualizations of Interpolated Copper (Cu) Contamination Levels in Lake Erie's Lakebed Sediment



Isometric Models

